



Professional Mortuary Solution Provider





AUTOPSY TABLE SERIE

ESS-JPT40A Multi-functional Autopsy Table

Specially designed for prosectorium, quality stainless steel, fine workmanship, acid & alkali proof, and deluxe moulding.

Features

- Equipped with weighing function (Max. 500kgs), for body or organ weighing.
- The surface is finished with circular arc, without scaling, convenient for cleaning.
- Sieved table-top plate with graduated ruler.
- The sink is equipped with a hair isolator to prevent from entering the drainage pipe.
- The Table has a manual sensor faucet, hot and cold water temperature adjustable.
- With movable spray water gun, pressure adjustable, easy to flush the dirt.
- The table-top can be side-turning, and it can be lifted to 15cm at maximum.
- 8 flushing nozzles on both sides, for washing away the dirt during dissecting.
- With a grinder underneath for disposing the waste, which will be drained away.
- A movable tray over the table for organs can be optional.
- With negative pressure suction system for removing the harmful gas or odour during dissecting.
- Size: 260*85*85cm, table top can go up 15cm at maximum.
- **Optionals:** 1. Movable organ tray; 2. Stainless headrest.

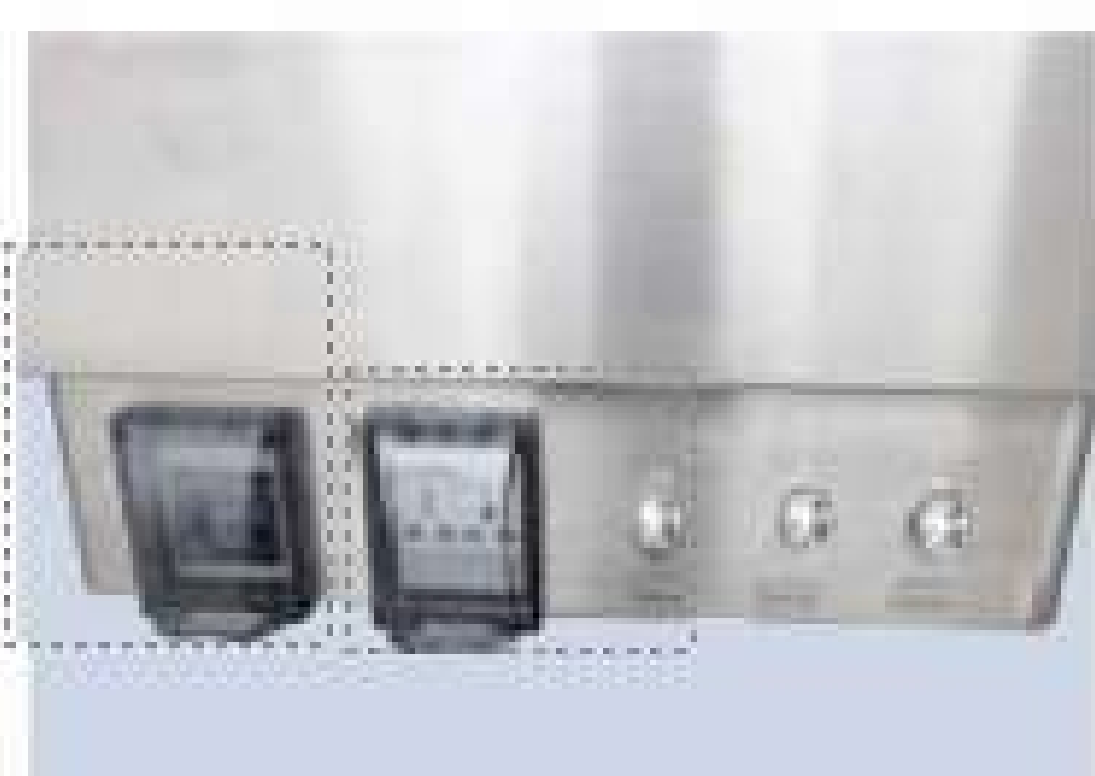


ESS-JPT30A Multi-functional Autopsy Table

Specially designed for prosectorium, quality stainless steel, fine workmanship, acid & alkali proof, and deluxe moulding.

Features

- Made of high quality stainless steel.
- The surface is finished with circular arc, without scaling, convenient for cleaning.
- Sieved table-top plate with graduated ruler.
- The sink is equipped with a hair isolator to prevent from entering the drainage pipe.
- The Table has a manual sensor faucet, hot and cold water temperature adjustable.
- With movable spray water gun, pressure adjustable, easy to flush the dirt.
- The table-top can be side-turning, and it can be lifted to 15cm at maximum.
- With a grinder underneath for disposing the waste, which will be drained away.
- A movable tray over the table for organs can be optional.
- With negative pressure suction system for removing the harmful gas or odour during dissecting.
- Size: 260*85*85cm, table top can go up 15cm at maximum.
- **Optionals:** 1. Movable organ tray; 2. Stainless headrest.

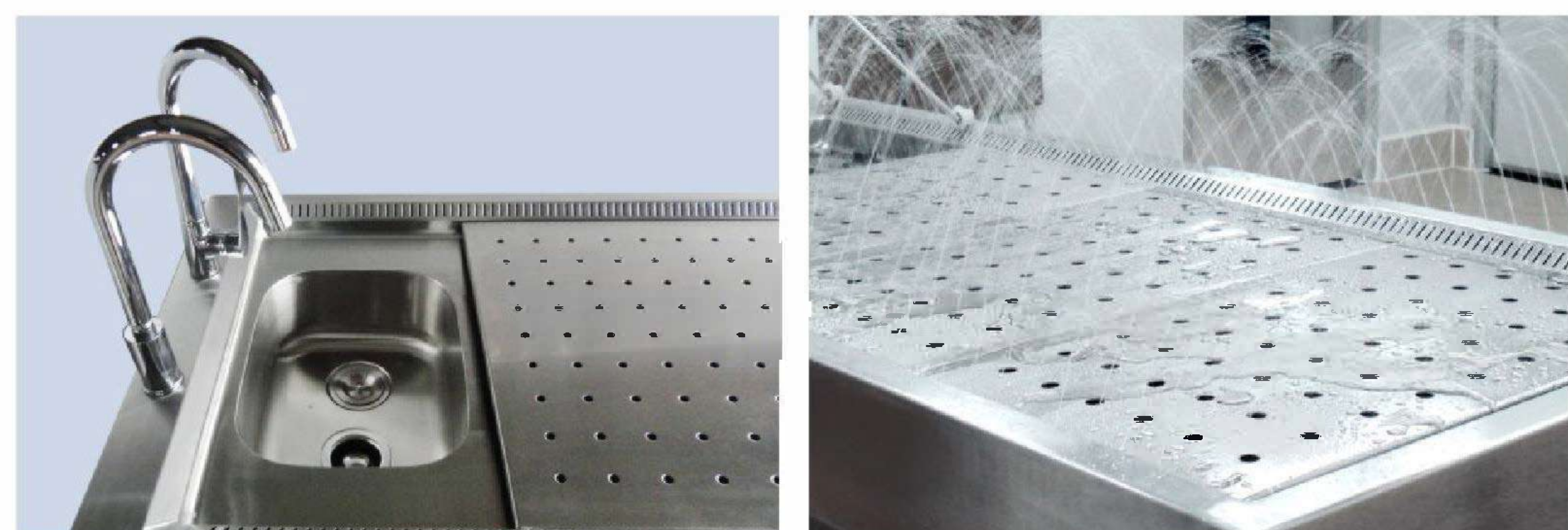


ESS-JPT20A/B Multi-functional Autopsy Table

Specially designed for prosectorium, quality stainless steel, fine workmanship, acid & alkali proof, and deluxe moulding.

Features

- Made of high quality stainless steel.
- The surface is finished with circular arc, without scaling, convenient for cleaning.
- With 3 sieved table-top plates, detachable and autoclavable.
- The sink is equipped with a hair isolator to prevent from entering the drainage pipe.
- The Table has a manual sensor faucet, hot and cold water temperature adjustable.
- With movable spray water gun, pressure adjustable, easy to flush the dirt.
- With water spay device on both sides, which can clean the body automatically.
- The height adjustable range is 20cm.
- With a grinder underneath for disposing the waste, which will be drained away.
- A movable tray over the table for organs can be optional.
- With negative pressure suction system for removing the harmful gas or odour during dissecting.
- Size **ESS-JPT20A**: 260*80*75~95cm
ESS-JPT20B: 260*80*85cm
- **Optionals**: 1. Movable organ tray; 2. Stainless headrest.

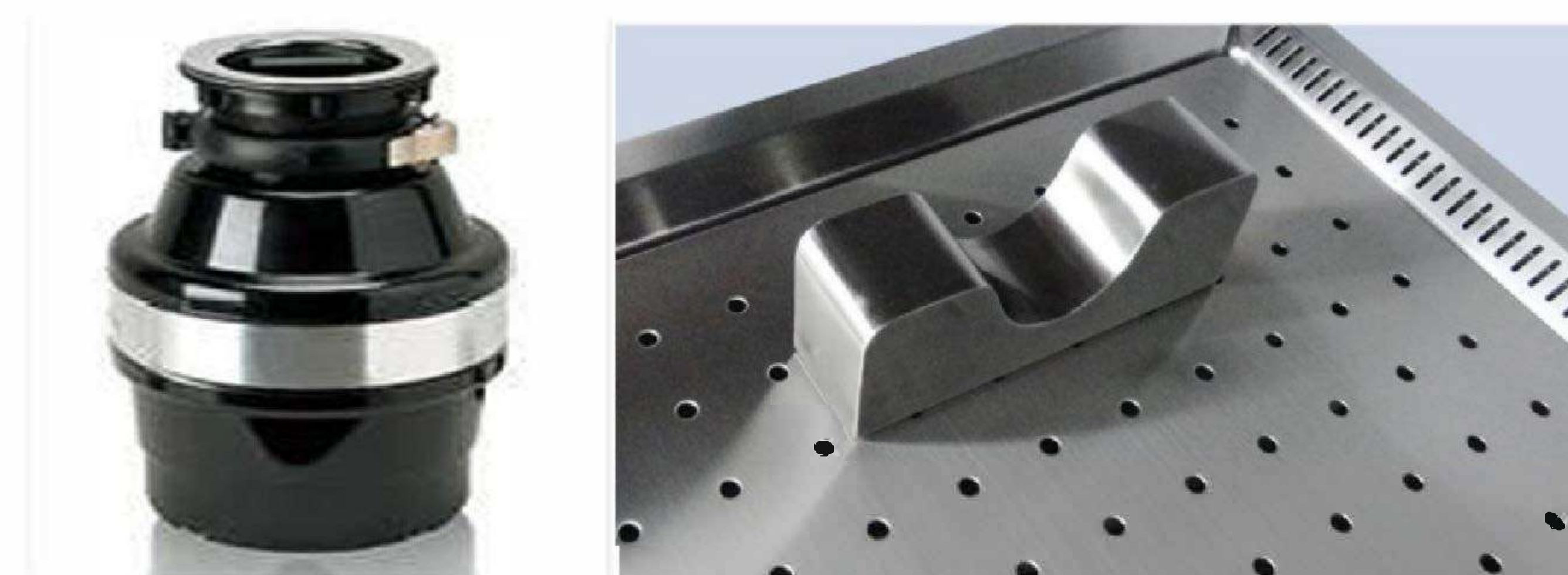


ESS-JPT19A Multi-functional Rotatable Autopsy Table

Specially designed for prosectorium, quality stainless steel, fine workmanship, acid & alkali proof, and deluxe moulding.

Features

- Made of high quality stainless steel.
- The surface is finished with circular arc, without scaling, convenient for cleaning.
- Sieved table-top plate with graduated ruler.
- The sink is equipped with a hair isolator to prevent from entering the drainage pipe.
- The Table has a manual sensor faucet, hot and cold water temperature adjustable.
- With movable spray water gun, pressure adjustable, easy to flush the dirt.
- The table-top can be lifted to 15cm at maximum, for easier observation.
- 8 flushing nozzles on both sides, for washing away the dirt during dissecting.
- With a grinder underneath for disposing the waste, which will be drained away.
- A movable tray over the table for organs can be optional.
- With negative pressure suction system for removing the harmful gas or odour during dissecting.
- The table can be rotatable at a 45° angle, both left and right.
- Size: 260*80*85cm, table top can go up 15cm at maximum.
- **Optionals**: 1. Movable organ tray; 2. Stainless headrest.



ESS-JPT18A Rotatable Autopsy Table

Specially designed for prosectorium, quality stainless steel, fine workmanship, acid & alkali proof, and deluxe moulding.

Features

- Made of high quality stainless steel.
- The surface is finished with circular arc, without scaling, convenient for cleaning.
- Table-top plates are detachable and autoclavable.
- The sink is equipped with a hair isolator to prevent from entering the drainage pipe.
- The Table has a manual sensor faucet, hot and cold water temperature adjustable.
- With movable spray water gun, pressure adjustable, easy to flush the dirt.
- A grinder can be optional for disposing the waste, which will be drained away.
- A movable tray over the table for organs can be optional.
- The table top can be rotatable at a 45° angle, both left & right.
- With electricity leakage protection at table side.
- With negative pressure suction system for removing the harmful gas or odour during dissecting.
- Size: 250*80*85cm
- **Optionals:** 1. Movable organ tray; 2. Stainless headrest.



ESS-JPT178 Autopsy Table

Specially designed for prosectorium, quality stainless steel, fine workmanship, acid & alkali proof, and deluxe moulding.

Features

- Made of high quality stainless steel.
- The surface is finished with circular arc, without scaling, convenient for cleaning.
- Water tank size: 45*32*18cm.
- The sink is equipped with a hair isolator to prevent from entering the drainage pipe.
- The Table has a manual sensor faucet, hot and cold water temperature adjustable.
- With movable spray water gun, pressure adjustable, easy to flush the dirt.
- The table-top sides are designed to be tilt (30°), and with holes.
- The four corners of the table top are arc moulding.
- A stainless headrest can be optional
- With electricity leakage protection at table side.
- With negative pressure suction system for removing the harmful gas or odour during dissecting.
- Size: 250*80*85cm



ESS-JPT16A/B Multi-functional Autopsy Table

Specially designed for prosectorium, quality stainless steel, fine workmanship, acid & alkali proof, and deluxe moulding.

Features

- Made of high quality stainless steel.
- The surface is finished with circular arc, without scaling, convenient for cleaning.
- With 3 sieved table-top plates, detachable and autoclavable.
- The sink is equipped with a hair isolator to prevent from entering the drainage pipe.
- The Table has a manual sensor faucet, hot and cold water temperature adjustable.
- With movable spray water gun, pressure adjustable, easy to flush the dirt.
- With water spray device on both sides, which can clean the body automatically.
- The height adjustable range is 20cm.
- With a grinder underneath for disposing the waste, which will be drained away.
- A movable tray over the table for organs can be optional.
- With negative pressure suction system for removing the harmful gas or odour during dissecting.
- Size **ESS-JPT16A**: 250*80*75~95cm (Height adjustable)
ESS-JPT16B: 250*80*85cm
- **Optionals**: 1. Movable organ tray; 2. Stainless headrest.



ESS-JPT10A/B Multi-functional Autopsy Table

Specially designed for prosectorium, quality stainless steel, fine workmanship, acid & alkali proof, and deluxe moulding.

Features

- Made of high quality stainless steel.
- The surface is finished with circular arc, without scaling, convenient for cleaning.
- With 3 sieved table-top plates, detachable and autoclavable.
- The sink is equipped with a hair isolator to prevent from entering the drainage pipe.
- The Table has a manual sensor faucet, hot and cold water temperature adjustable.
- With movable spray water gun, pressure adjustable, easy to flush the dirt.
- With water spray device on both sides, which can clean the body automatically.
- The height adjustable range is 20cm.
- With a grinder underneath for disposing the waste, which will be drained away.
- A movable tray over the table for organs can be optional.
- With negative pressure suction system for removing the harmful gas or odour during dissecting.
- Size **ESS-JPT10A**: 250*80*75~95cm (Height adjustable)
ESS-JPT10B: 250*80*85cm
- **Optionals**: 1. Movable organ tray; 2. Stainless headrest.



ESS-JPT9C/D Rotatable Autopsy Table

Specially designed for prosectorium, quality stainless steel, fine workmanship, acid & alkali proof, and deluxe moulding.

Features

- Made of high quality stainless steel.
- The surface is finished with circular arc, without scaling, convenient for cleaning.
- Water inlet & outlet, socket are placed under the base column.
- Equipped with a hair isolator to prevent from entering the drainage pipe.
- With manual sensor faucet, hot and cold water temperature adjustable.
- Movable spray water gun with pressure adjustable flushes the dirt easily.
- Optional grinder for disposing the waste, which will be drained away.
- A movable tray over the table for organs can be optional.
- The exhaust duct is inside the base column.
- With electricity leakage protection at table side.
- With negative pressure suction system for removing the harmful gas or odour during dissecting.
- Size **ESS-JPT9C**: 250*80*75~95cm (Height adjustable)
- Size **ESS-JPT9D**: 250*80*85cm.
- **Optionals**: 1. Movable organ tray; 2. Stainless headrest.



ESS-JPT9A/B Autopsy Table

Specially designed for prosectorium, quality stainless steel, fine workmanship, acid & alkali proof, and deluxe moulding.

Features

- Made of high quality stainless steel.
- The surface is finished with circular arc, without scaling, convenient for cleaning.
- Water inlet & outlet, socket are placed under the base column.
- Equipped with a hair isolator to prevent from entering the drainage pipe.
- With manual sensor faucet, hot and cold water temperature adjustable.
- Movable spray water gun with pressure adjustable flushes the dirt easily.
- Optional grinder for disposing the waste, which will be drained away.
- A movable tray over the table for organs can be optional.
- The exhaust duct is inside the base column.
- With electricity leakage protection at table side.
- With negative pressure suction system for removing the harmful gas or odour during dissecting.
- Size **ESS-JPT9A**: 240*80*75~95cm (Height adjustable)
- Size **ESS-JPT9B**: 240*80*85cm.
- **Optionals**: 1. Movable organ tray; 2. Stainless headrest.



ESS-HDC92A Multi-functional Defrosting Tank

Specially designed for prosectorium, quality stainless steel, fine workmanship, acid & alkali proof, and deluxe moulding.

Features

- ⊙ The cover can be hung at one side vertically when it is open, which doesn't occupy any space.
- ⊙ The operation table top is detachable, convenient for regular cleaning.
- ⊙ Corpse stretcher trolley can be moved into the tank directly, without the need to lift the body manually.
- ⊙ The tank is equipped with water spray for cleaning the body or dirt.
- ⊙ The table top is electric lifting, from 50-420mm.
- ⊙ Control buttons for lifting, heating, water inlet & outlet, water spray are installed on table side.
- ⊙ With water heater.
- ⊙ Built-in recirculating water treatment system, water inlet & outlet, which speeds up defrosting.
- ⊙ With water spray gun to wash the soaked body.
- ⊙ With water outlet at the base for drainage.
- ⊙ With electricity leakage protector and waterproof socket.
- ⊙ With suction system, which can suck away the harmful gas or odour timely.
- ⊙ 220*79*85cm (Electric lifting)



ESS-HDC89A/B Multi-functional Defrosting Tank

Specially designed for prosectorium, quality stainless steel, fine workmanship, acid & alkali proof, and deluxe moulding.

Features

- ⊙ The cover can be hung at one side vertically when it is open, which doesn't occupy any space.
- ⊙ The operation table is detachable, convenient for regular cleaning.
- ⊙ The tank is equipped with water spray gun for cleaning the body or dirt.
- ⊙ The waste water can be drained away directly.
- ⊙ With cold & hot water regulating valve. (Need to connect to external water heater)
- ⊙ The operation table can be lifted manually or by electric, from 50-350mm.
- ⊙ With electricity leakage protector and waterproof socket.
- ⊙ Built-in recirculating water treatment system, water inlet & outlet, which speeds up defrosting.
- ⊙ **ESS-HDC89A** 220*74*85cm, electric lift.
- ⊙ **ESS-HDC89B**: 220*74*85cm, manual lift.

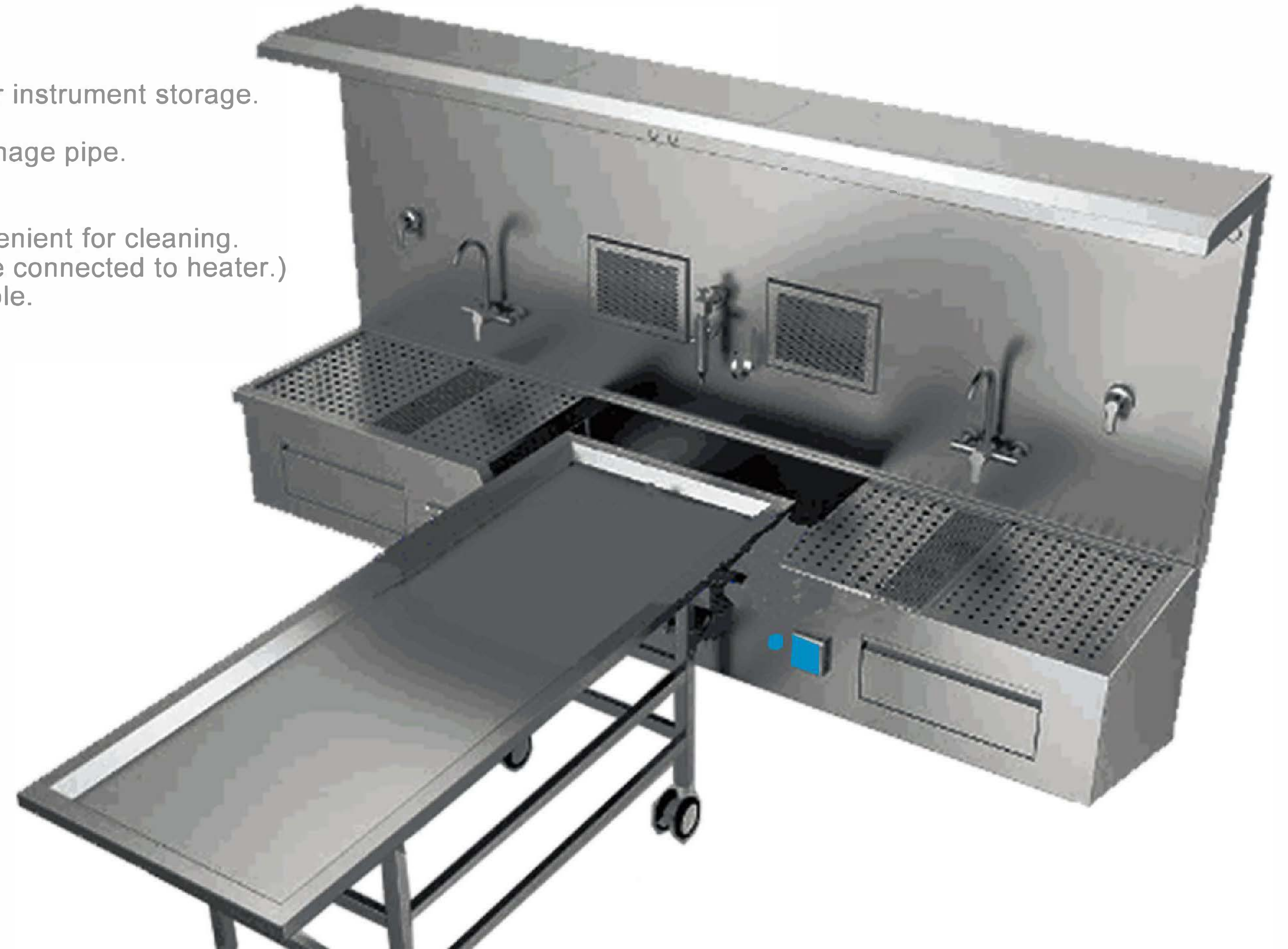


ESS-JPZ160/240 Autopsy Workstation

Specially designed for prosectorium, quality stainless steel, fine workmanship, acid & alkali proof, and deluxe moulding.

Features

- Table surface is equipped with movable filter plates, and two drawers underneath for instrument storage.
 - With air outlet, it is easy to purify the air (Should be connected to the exhaust fan).
 - A hair isolator is installed in the water tank to prevent the hair from entering the drainage pipe.
 - Equipped with a hair isolator to prevent from entering the drainage pipe.
 - The grinder can crush the dissected tissue through the drainage. (Optional).
 - The surface of the table is connected with circular arc without scaling, which is convenient for cleaning.
 - Equipped with cold & hot water mixer, manual faucet and soft water pipe. (Should be connected to heater.)
 - With 9 multifunctional mobile spray washing guns, which can wash the whole dirt table.
 - With 5 flushing nozzles, for cleaning dirt during autopsy.
 - The upper part is equipped with a LED lamp, hanging hook and UV lamp.
 - Electric leakage protection, waterproof socket, power supply: 220V/110V
- Size **ESS-JPZ240**: 240*60*110cm (Double positions)
ESS-JPZ160: 160*60*110cm (Single position).
- **Optional**: Mobile necropsy table.



ESS-TSC-2B Necropsy Table

Specially designed for prosectorium, quality stainless steel, fine workmanship.

Features

- It works individually or with necropsy wall table & body freezing cabinet.
- Table surface with no sanitary dead angle, easy for cleaning, acid and alkali proof.
- Table is tiltable, with hand crank at one end.
- Table lifting is operated through hand cranks.
- Height adjustment range is 150mm, and single-sided tilting range is 800-950mm.
- Height adjustment range can also be customized upon request.

- Size 200*70*80~95cm (Double cranks)
 200*70*80~95cm (Single crank)



ESS-TG 10 1 /102/103/104/106

Specially designed for prosectorium, quality stainless steel, fine workmanship, acid & alkali proof, and deluxe moulding.

Features

- ◎ Design. Our company has a unique design, beautiful appearance, high quality 304 stainless steel, durable, good corrosion resistance, heat resistance, low temperature strength and mechanical properties.
- ◎ Independent temperature control system. The temperature range of each refrigeration system can be adjusted separately. The temperature of each chamber is independent. It takes several rooms to open several rooms, which not only saves energy, but also can be independently checked & repaired when there is a problem with the machine. Does not affect the work of other rooms, and the independent space can respect the privacy of each corpse, easy to operate, each room has an independent operation control screen, soft keys, easy to operate.
- ◎ Independent removable trays, each room is equipped with the same 304 stainless steel removable tray, the inside of the refrigerator has pulleys, the operator can easily drag, the tray can be used with our mortuary lift truck.
- ◎ Refrigeration compression system. Our refrigerator uses Danfoss compressors. As we know, the black Danfoss compressors are well known in the world for their small size, light weight, low noise, high efficiency and long life. Especially the Danfoss compressors are designed to withstand noise and high efficiency. And the symbol of energy saving, of course, we can also configure other compressors according to customer requirements, such as Chinese compressors, the same performance, the price is also very cheap.
- ◎ Heat insulation. The insulation layer of the refrigerator is formed by a professional foaming machine at a time, with high thickness, high density, heat insulation, energy saving and environmental protection.
- ◎ Door mat seal. It adopts high-quality door mat sealing strip, which has strong anti-aging ability, effectively prevents the cold air in the refrigerator from leaking and the intrusion of outside heat, and is durable and replaceable.
- ◎ Safety. Each room is equipped with a security lock to prevent loss.
- ◎ After sales service. Our company's mortuary products are provided with a 1-year warranty, permanent technical support through video or other means, in the process of use, any unclear operational problems can contact us.

Product model	Climate type	Temperature (factory set)	Internal size (mm W*D*H)	Exterior size (mm W*D*H)	Weight (kg)	Layers
ESS-TG101	N	-5 / -16°C	1950*630*440	2480*800*610	180	1
ESS-TG102	N			2480*810*1300	280	2
ESS-TG103	N			2480*810*1900	350	3
ESS-TG104	N			2480*1600*1300	420	4
ESS-TG106	N			2480*1600*1900	550	6



ESS-TE-QCT-2 Pathology Sampling Workstation

Features

- ⊙ Good-looking design with quality stainless steel structure, corrosion & high temperature resisting, and durable.
- ⊙ With downward suction system, which can efficiently suck away the harmful gas or odour.
- ⊙ With stretchable faucet pipe, convenient for cleaning the whole countertop.
- ⊙ With cold & hot water faucet. (Should connect to external water heater)
- ⊙ The sink has hair filter, in case of drainage blockage.
- ⊙ With tissue spotlight and 10x magnifying lens, for easier sampling.
- ⊙ Magnetic absorbing tool rack for metal sampling tools or autopsy instrument.
- ⊙ With LED lighting and UV lamp for sterilization.
- ⊙ Size A: 120*60*180cm (Single position)
- ⊙ B: 180*60*180cm (Double positions)

Optionals

- ⊙ Countertop PVC plates with graduated ruler.
- ⊙ Low-noise centrifugal fan, for exhausting harmful gas. (exhausting rate: 800-1000m³/h).
- ⊙ Grinder for disposing waste tissue or bones.



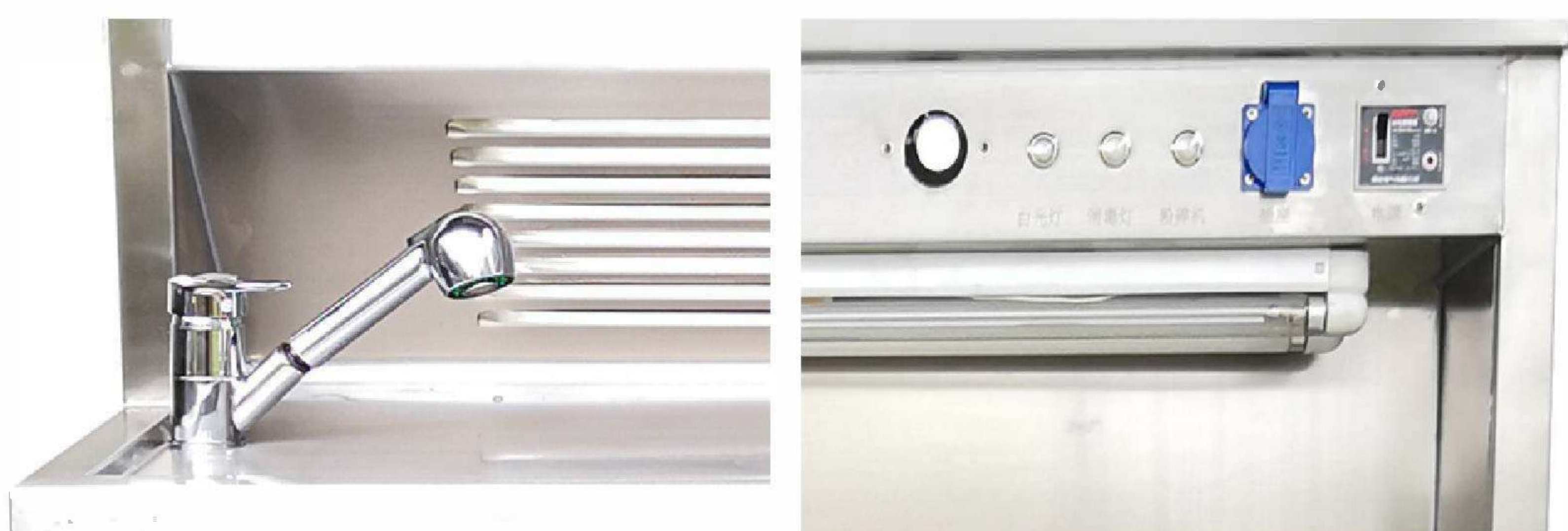
ESS-TE-QCT-1 Pathology Tissue Sampling Station

Features

- ⊙ Good-looking design with quality stainless steel structure, corrosion & high temperature resisting, and durable.
- ⊙ With downward suction system, which can efficiently suck away the harmful gas or odour.
- ⊙ With stretchable faucet pipe, convenient for cleaning the whole countertop.
- ⊙ With cold & hot water faucet. (Should connect to external water heater)
- ⊙ The sink has hair filter, in case of drainage blockage.
- ⊙ With LED lighting and UV lamp for sterilization.
- ⊙ Size A: 120*60*170cm (Single position)
- ⊙ B: 180*60*170cm (Double positions)

Optionals

- ⊙ Countertop PVC plates with graduated ruler.
- ⊙ Low-noise centrifugal fan, for exhausting harmful gas. (exhausting rate: 800-1000m³/h).
- ⊙ Grinder for disposing waste tissue or bones.



ESS-TE-QCT-8 Pathology Sampling Workstation

Features

- Good-looking design with quality stainless steel structure, corrosion & high temperature resisting, and durable.
- With downward suction system, which can efficiently suck away the harmful gas or odour.
- With stretchable faucet pipe, convenient for cleaning the whole countertop.
- With cold & hot water faucet. (Should connect to external water heater)
- The sink has hair filter, in case of drainage blockage.
- With tissue spotlight and 10x magnifying lens, for easier sampling.
- Magnetic absorbing tool rack for metal sampling tools or autopsy instrument.
- With LED lighting and UV lamp for sterilization.
- Size A: 120*60*190cm (Single position)
- Size B: 180*60*190cm (Double positions)

Optionals

- Countertop PVC plates with graduated ruler.
- Low-noise centrifugal fan, for exhausting harmful gas. (exhausting rate: 800-1000m³/h).
- Grinder for disposing waste tissue or bones.
- Front glass door with manual or electric lifting.



ESS-TE-QCT-7 Pathology Tissue Sampling Station

Features

- Good-looking design with quality stainless steel structure, corrosion & high temperature resisting, and durable.
- With downward suction system, which can efficiently suck away the harmful gas or odour.
- With stretchable faucet pipe, convenient for cleaning the whole countertop.
- With cold & hot water faucet. (Should connect to external water heater)
- The sink has hair filter, in case of drainage blockage.
- With LED lighting and UV lamp for sterilization.
- Size A: 120*60*190cm (Single position)
- Size B: 180*60*190cm (Double positions)

Optionals

- Countertop PVC plates with graduated ruler.
- Low-noise centrifugal fan, for exhausting harmful gas. (exhausting rate: 800-1000m³/h).
- Grinder for disposing waste tissue or bones.
- Front glass door with manual or electric lifting.



ESS-BGT76 Stainless Ventilated Side Cabinet

Features

- ⊙ Made of quality #304 stainless steel, the upper part is instrument storage cabinet, and the lower part is ventilation cabinet.
- ⊙ With manual faucet, cold & hot water. (Need to connect to water heater).
- ⊙ With a sink at either end, and the sink has hair filter to avoid drainage blocking.
- ⊙ The storage cabinet is double-door opening design.
- ⊙ Size: 200*50*80cm (Customizable upon request).



ESS-QXC72 Stainless Cleaning Sink

Features

- ⊙ The 4 corners of the sink are arc mould pressing, convenient for cleaning and sterilizing.
- ⊙ Inclined design with splashback, and with a hair filter at the drainage.
- ⊙ Equipped with infrared sensor faucet, which can reduce cross-infection.
- ⊙ Faucet sensing range: 12~18cm.
- ⊙ Equipped with a soap dispenser.
- ⊙ The faucet has cold and hot water regulating valve. (Need to connect to external heater.)
- ⊙ The diameter of the water pipe is 20mm.
- ⊙ Storage cabinet underneath.
- ⊙ **Size A:** 180*60*120cm, 3-person positions
- ⊙ **Size B:** 120*60*120cm, 2-person positions



ESS-SJT-1 A Stainless Electric Body Lifter

Features

- The lifter is composed of base, lifting support and a body tray.
- It is specially for autopsy table or body freezer.
- The body tray is a concave shape with drainage, convenient for cleaning.
- X-shaped lifting pushrod, smooth, steady, and noiseless.
- The lifting controller is easy to operate.
- Height adjustable range: 680~1300mm.
- The lifter can work 30~50 times when it is fully charged.
- 4 silent universal castors, 2 with brake.
- Size **ESS-JT-1A**: 230*65*68~130cm (Detachable body tray)

Optionals

- Detachable body tray, with handles at both ends.
- Rollers for the detachable tray.



ESS-JT-YC15 Hydraulic Corpse Lifter

Features

- The lifter is composed of base, lifting support and a body tray.
- It is specially for autopsy table or body freezer.
- The body tray is a concave shape with drainage, convenient for cleaning.
- X hydraulic lifting pushrod, smooth, steady, and noiseless.
- The foot pedal is easy to operate.
- Height adjustable range: 300~1800mm.
- When it stops going up or down, replenish hydraulic oil.
- 4 silent universal castors, 2 with brake.
- Size **ESS-JT-YC15** 230*70*30~180cm (Detachable body tray)

Optionals

- Detachable body tray, with handles at both ends.
- Rollers for the detachable tray.



ESS-JT-58A/B Stainless Electric Body Lifter

Features

- The lifter is composed of base, lifting support and a body tray.
- It is specially for autopsy table or body freezer.
- The body tray is a concave shape with drainage, convenient for cleaning.
- X-shaped lifting pushrod, smooth, steady, and noiseless.
- The lifting controller is easy to operate.
- Height adjustable range: 420~1300mm.
- The lifter can work 30~50 times when it is fully charged.
- 4 silent universal castors, 2 with brake.
- Size **ESS-JT-58A**: 220*65*42~130cm (Detachable body tray)
- **ESS-JT-58B**: 220*65*42~130cm (Fixed body tray)

Optionals

- Detachable body tray, with handles at both ends.
- Rollers for the detachable tray.
- 800mm stainless push & pull handguard at either side.



ESS-JT-56A/B Hydraulic Corpse Lifter

Features

- The lifter is composed of base, lifting support and a body tray.
- It is specially for autopsy table or body freezer.
- The body tray is a concave shape with drainage, convenient for cleaning.
- Double X hydraulic lifting pushrod, smooth, steady, and noiseless.
- The foot pedal is easy to operate.
- Height adjustable range: 420~1300mm.
- When it stops going up or down, replenish hydraulic oil.
- 4 silent universal castors, 2 with brake.
- Size **ESS-JT-56A**: 220*65*42~130cm (Detachable body tray)
- **ESS-JT-56B**: 220*65*42~130cm (Fixed body tray)
- Body tray size: 190*61cm

Optionals

- Detachable body tray, with handles at both ends.
- Rollers for the detachable tray.
- 800mm stainless push & pull handguard at either side.



ESS-JT-52A/B Stainless Hydraulic Body Lifter

Features

- The lifter is composed of base, lifting support and a body tray.
- It is specially for autopsy table or body freezer.
- The body tray is a concave shape with drainage, convenient for cleaning.
- X-shaped lifting pushrod, smooth, steady, and noiseless.
- The foot pedal is easy to operate.
- Height adjustable range: 420~1300mm.
- When it stops going up or down, replenish hydraulic oil.
- 4 silent universal castors, 2 with brake.
- Size **ESS-JT-52A**: 220*65*42~130cm (Detachable body tray)
- **ESS-JT-52B**: 220*65*42~130cm (Fixed body tray)

Optionals

- Detachable body tray, with handles at both ends.
- Rollers for the detachable tray.
- 800mm stainless push & pull handguard at either side.



ESS-JT-50A/B Electric Corpse Lifter

Features

- The lifter is composed of base, lifting support and a body tray.
- It is specially for autopsy table or body freezer.
- The body tray is a concave shape with drainage, convenient for cleaning.
- Double X hydraulic lifting pushrod, smooth, steady, and noiseless.
- The lifting controller is easy to operate.
- Height adjustable range: 420~1300mm.
- The lifter can work 30~50 times when it is fully charged.
- 4 silent universal castors, 2 with brake.
- Size **ESS-JT-50A**: 220*65*42~130cm (Detachable body tray)
- **ESS-JT-50B**: 220*65*42~130cm (Fixed body tray) Body tray size: 190*61cm

Optionals

- Detachable body tray, with handles at both ends.
- Rollers for the detachable tray.
- 800mm stainless push & pull handguard at either side.



ESS-JPT-4A Simple Stainless Autopsy Table

Features

- ⊙ The table-top is concave design to avoid water spilling, arc mould pressing, acid and alkali proof.
- ⊙ With 2 slope drainage trough on tabletop, through which the waste water will flow to the sink.
- ⊙ There is 1.5cm height difference between the left and the right side of the tabletop, for better drainage.
- ⊙ The size of the sink is 45*32*18cm, with no sanitary dead angle, easy to clean.
- ⊙ With hair filter to avoid water pipe blockage.
- ⊙ With flexible water spray gun, pressure adjustable.
- ⊙ The four table legs are detachable, convenient for transport and installation.
- ⊙ **ESS-JPT-4A**: 240*70*85cm, with castors
- ⊙ **ESS-JPT-04B**: 260*70*90 cm, fixed



ESS-CFJ-3 Corpse Storage Rack

Features

- ⊙ Specially for forensics lab, mortuary room, freezing cabinet, etc.
- ⊙ Fully made of quality stainless steel, rust and corrosion proof, and durable.
- ⊙ With 3 detachable body tray, which is concave design and has no sanitary dead angle.
- ⊙ The body trays have lift handles at both sides, auto locking.
- ⊙ Each layer has 5 stainless roller for tray moving.
- ⊙ 4 silent universal castors, 2 with brake.
- ⊙ Size: 200*67*180cm (Other siezs are customizable upon request)



ESS-CLD400 Coffin Lowering Device

Material: Aluminum alloy and stainless steel
 Telescopes from 62"x25" to 94"x38"
 Straps: 21' long, each tested to 400 lbs
 Loading bearing: 800 lbs capacity



ESS-TSC151 Mortury Cot

Material: Aluminum alloy frame
 Size: 193*55*83cm
 Capacity: 250 kgs



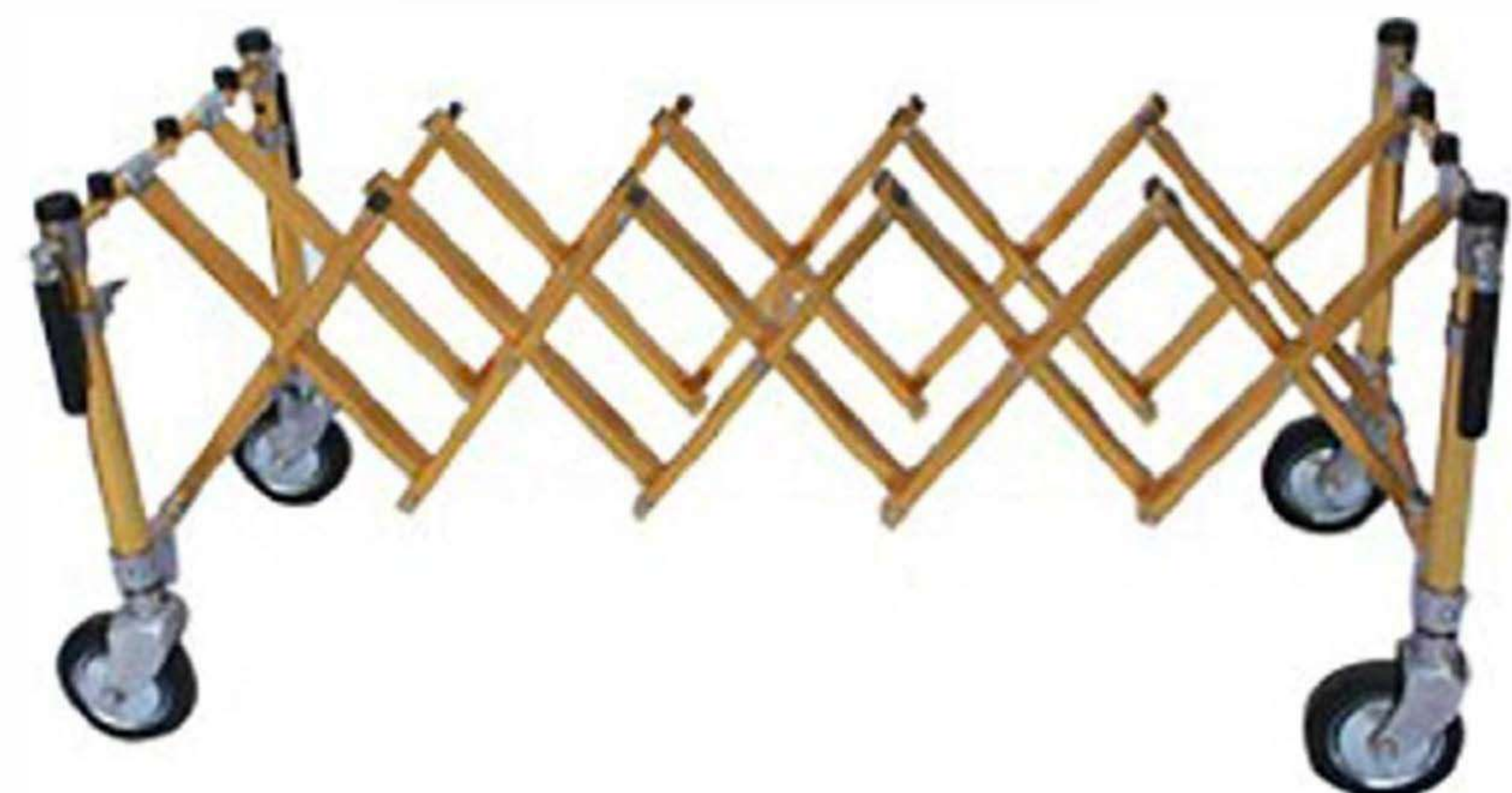
ESS-TSC152 Mortuary Cot

Material: Aluminum alloy frame
 Size: 193*55*83cm
 Capacity: 450 kgs



ESS-TSC161 Church Trolley

Made of quality aluminum
 Size: 155*55*56cm
 Capacity: 600 kgs



ESS-DJC111 Stretcher with Body Bag

Material: Aluminum alloy frame
 Size: 202*5.3*9.5cm
 Capacity: 160 kgs



ESS-TD01/03/06 Body Bag

ESS-TD01



PVC
 Long zipper
 Without handle
 L*W (210*80cm)

ESS-TD03



Nylon + PVC
 Long zipper
 With 4 handles
 L*W (250*120cm)

ESS-TD06



TNT
 Long zipper
 With 4 handles
 L*W (210*80cm)

ESS-TSC-2E Cadaver / Corpse Carrier

Material: Quality 304 stainless steel
Size: 208*66*66/93cm



ESS-TSC-YC05 Corpse Trolley with Cover

Material: Quality 304 stainless steel
Size: 220*68*80cm
Capacity: 220 kgs



ESS-TSC-2C Corpse Transport Cart

Material: Quality 304 stainless steel
Size: 220*68*75cm
Capacity: 200 kgs



ESS-TSC-28 Corpse Trolley

Made of quality stainless steel
Size: 200*60*80-100cm
Capacity: 200 kgs



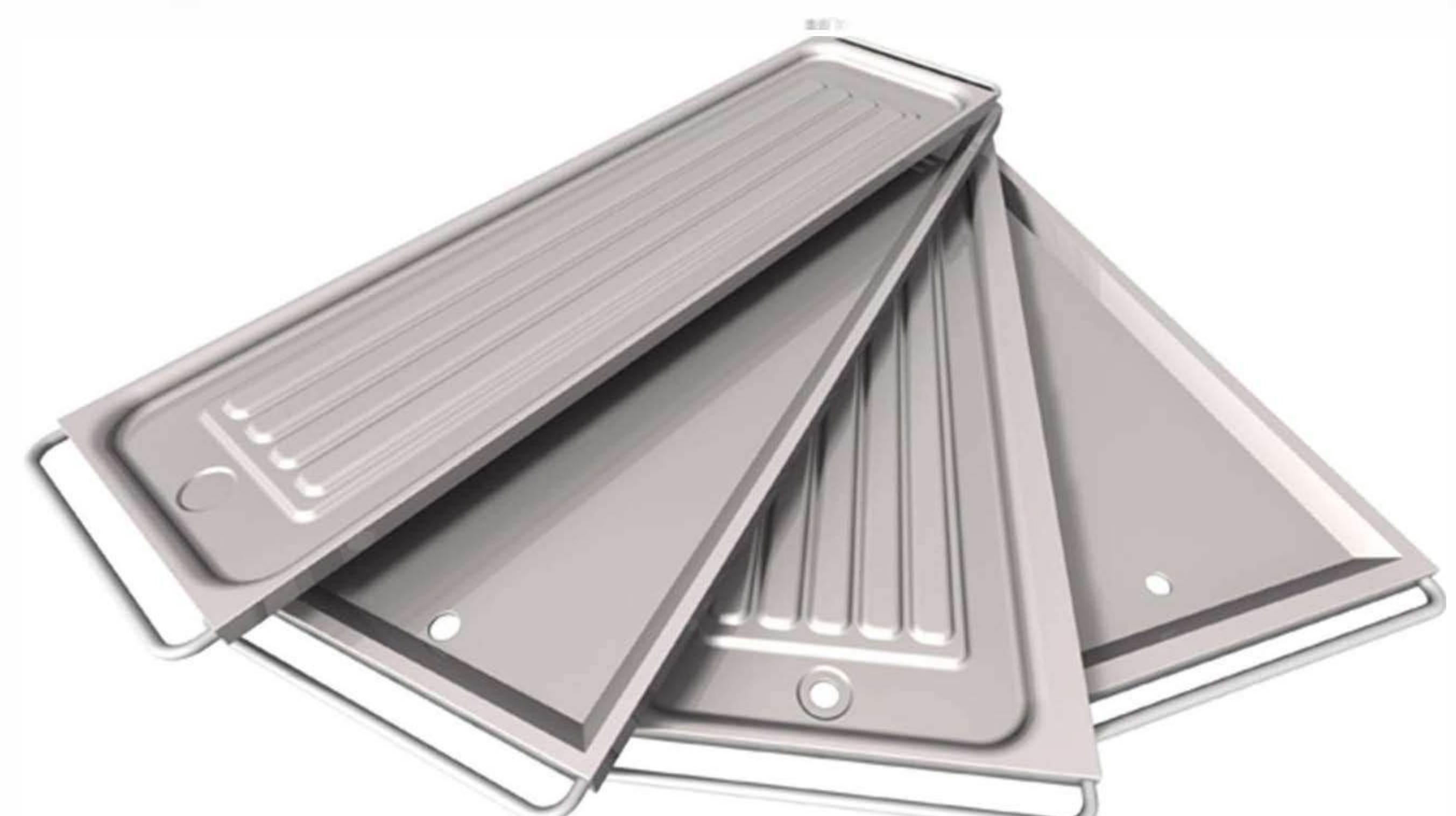
ESS-TSC-2A

Material: Quality 304 stainless steel
Size: 200*65*80cm
Capacity: 200 kgs



ESS-TP304 Body Tray

Material: Quality 304 stainless steel
Size: To customize upon request



ESS-JP-F38 Recording Table

Size A: 60*40*80cm
Size B: 60*40*80cm



ESS-JP-F36 Stainless Sorting Table

Made of quality 304 stainless steel
Size: 150*60*80cm



ESS-JP-F32A/B Drying Hanger

Size A: 180*80*135cm
Size B: 150*80*135cm



ESS-JP-F30 Stainless Incensing Cabinet

Made of quality 304 stainless steel
Size: 55*45*80cm



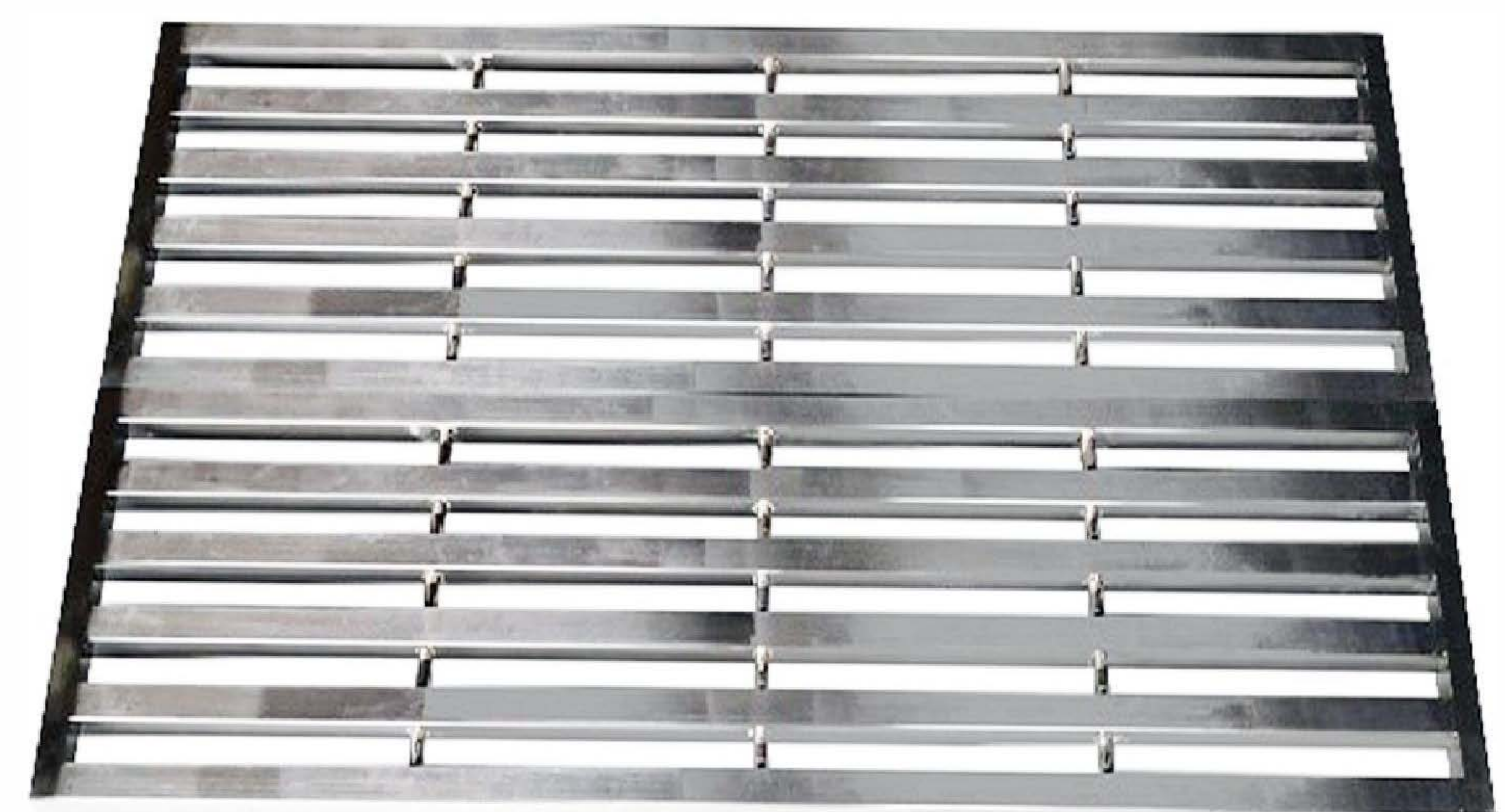
ESS-JP-F28 Stainless Foot Stool

Made of quality stainless steel
Size: 100*60*25/50cm



ESS-JP-F30 Stainless Pedal Plate

Made of quality 304 stainless steel
Size: 120*40cm



ESS-JPJ25 Autopsy Saw

Swing Rate: 10000 times/minute Rated Voltage: DC24V
Total output power: 120W



ESS-JPJ22 Autopsy Saw with Vacuum Unit

Swing Rate: 10000 times/minute
Rated Voltage: DC24V
Total output power: 120W
With semicircular protector over the saw blade.
The splashing parts or liquid will be vacuumed away.



ESS-JP-F20 Head Frame

Made of quality stainless steel



ESS-JP-F18 Organ Hanging Weighing Scale

Weighing capacity: Max. 10kgs



ESS-OT05L3 Mobile OT Lamp

Mobile, with battery optional



ESS-JP-F15 Sterilization Cabinet

UV and Ozone disinfection
Size: 48*40*123cm, 150L, 15KG



ESS-JPT-S30 Autopsy Table

Made of quality stainless steel
Size: 240*65*85cm



ESS-JPT-S29 Autopsy Table

Made of quality stainless steel
Size: 200*65*85cm



ESS-JPT-S28 Autopsy Table

Made of quality stainless steel
Size: 200*65*85cm



ESS-JPT-S27A/B Autopsy Table

Made of quality stainless steel
Size A: 200*65*85cm, mobile
Size B: 200*65*85cm, fixed



ESS-GZT240 Corpse Perfusion Table

Made of quality stainless steel
Size: 240*65*85cm



ESS-TSC250 Corpse Stretcher

Made of quality stainless steel
Size: 190*65*80cm, mobile



ESS-JP-S22 Specimen Tank

Made of quality stainless steel
Size: 160*70*60cm



ESS-JP-S20 Stainless Specimen Box

Made of quality stainless steel
Size: 130*65*85cm



ESS-QXC-S18 Stainless Sink

Made of quality stainless steel
Size: 150*55*88cm



ESS-QXC-S16 Stainless Sink

Made of quality stainless steel
Size: 81*102/51*104cm



ESS-QXC-S15 Stainless Sink

Made of quality stainless steel
Size: 55*45*80cm



ESS-ZZG-S12 Stainless Steam Cabinet

Made of quality stainless steel
Size: 80*55*180cm



16L/18L